



Overt and covert systems to locate, monitor and protect people and property worldwide

GT9000

CELLULAR

INTERNET LOCATING SERVICE

What is the GT9000 GeonixLocate™ Internet Locating Service?

The GT9000 service provides a graphical & reporting tool for monitoring tracked Cellular, Covert and Satellite units on personal computers. Using a secure site on the internet, authorised users can gain access to graphical portrayal of their assets' locations on detailed digitalised maps and be presented with a wide range of customisable reports.

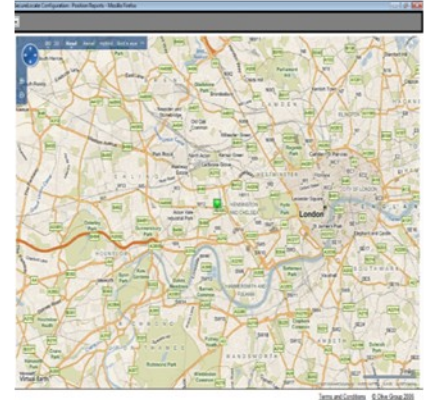
By use of the GeonixLocate™ central server, updates to the software and continuous availability are assured without the user having to take on the responsibility of installing, managing and updating software on their own servers and networks.

What does it allow you to do?

- locate your mobile assets and their location history anywhere in the world
- know almost instantly when your asset reaches or departs from any location
- develop more efficient routes and loads
- enforce company policy with respect to speed, driver rest time and location limits
- provide additional security to valuable vehicles and cargos
- provide 'panic' alarm facilities in the event of danger or breakdown

Why use GT9000 GeonixLocate™ internet locating service for your tracking and mapping solution?

- practicality: allows users to monitor their own personnel and assets
- multi-asset functionality: show entire fleet or individual assets, check one day's history
- detailed mapping, satellite imagery and aerial photography as provided using both Google Maps and Windows Virtual Earth
- current (multi-asset view of all customer assets) or historic (view of previous positions of a single unit) available
- minimal training required: simple IE or Firefox browser interface
- helpdesk & training support packages to ensure you get the maximum value from the software for your tracking requirements



Provided FREE OF CHARGE to registered resellers, distributors and end-users

Key Features:

- accepts data from remote units via GPRS or SMS
- supports voice calling/silent listening in (device dependent)
- view one vehicle or person or all of your fleet
- obtain day's history of asset movement
- multiple alarm states as standard (panic, geofence, speeding, etc)
- country, major route and detailed street mapping available
- Bird's Eye aerial photography in many locations
- satellite imagery can be overlaid on street/route maps
- simple one-click configuration of devices
- interfaced with Google Maps/Windows Virtual Earth

CELLULAR

In-vehicle tracking, monitoring and communications units with extended capabilities operating on the GSM platform

Requirements for end-to-end solution:

- compatible tracking device
- works with all Geonix Satellite and cellular units, plus selected covert range devices

Geonix Tracking Limited, The Coach House, Barrow Castle, Rush Hill, Bath, BA2 2QR, UK. t: +44 (1225) 470013

Geonix Limited, Wisdom Tower, Ayios Pavlos Street, 1105, Nicosia, Cyprus. t: +357 (22) 103 562

Geonix Dutrax LLC, World Trade Centre, Sheikh Zayed Road, Dubai, UAE. t: + 971 (50) 6571461

